

# GREEN GRIDTIE™ RESIDENTIAL SOLAR POWER SYSTEM



GREEN GRIDTIE™  
solar power system



## GREEN GRIDTIE™ Solar Power Systems are:

- Pre-engineered by solar professionals
- Safe and code compliant
- Built with quality components to assure long system life
- Eligible for state incentives

## Why install a GREEN GRIDTIE™ Solar Power System:

- Turn solar energy into electricity
- Reduce fossil fuel dependence
- Reduce green house gas emissions
- Produce up to 100% of your power needs
- Protection against rising electrical costs
- Enhanced home equity
- Attractive on your roof
- Positive cash flow
- Rebates and financing available

*"I am an environmental leader, and I am saving money!"*  
GREEN GRIDTIE™ customer, California

GREEN GRIDTIE™ Solar Power Systems are available at:





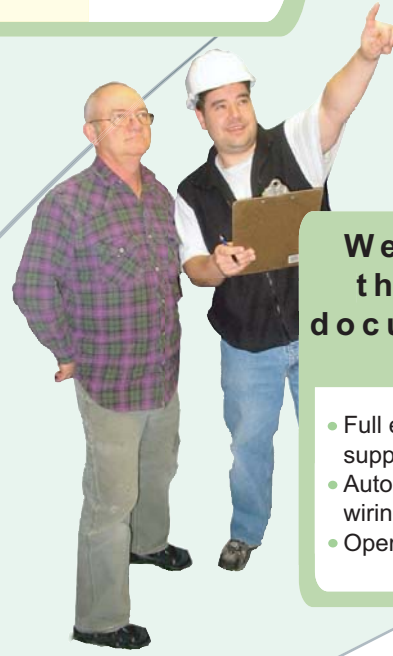
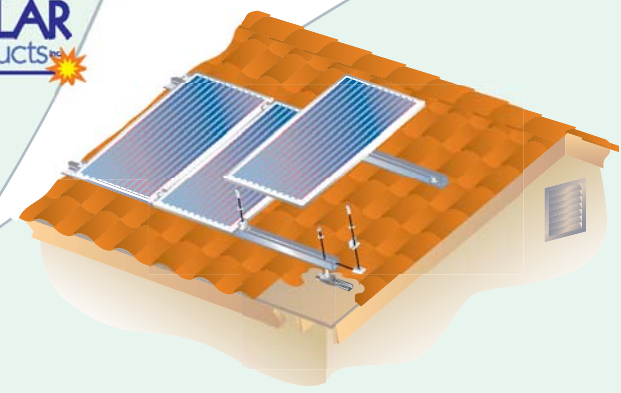
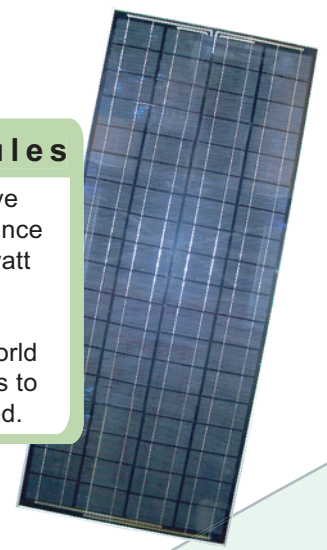
# GREEN GRIDTIE™ RESIDENTIAL SOLAR POWER SYSTEM

Specifications and Ratings	GGSPS-2000	GGSPS-3000
AC kW-hr/day output (avg.)	6.8-11.1	9.6-15.5
DC Watts-STC	2200	3080
DC Watts-PTC (CEC)	1968	2755
Array size in square feet	218	305
<b>Photovoltaic Array</b>		
PV Modules	Evergreen EC-110	
Module Quantity	20	28
Roof Mounting System	Patented "Top Down" Prosolar racks	
PV Combiner Box	600 VDC rated	
MC Cables	All series and output cables provided	
PV Ground Strap	#6 copper wire & lugs	
TECK Cable	PV combiner to inverter cable	
<b>Inverter and Switchgear</b>		
Inverter	Fronius IG 2000	Fronius IG 3000
AC/DC Disconnect	Included with inverter	
30A AC Grid Disconnect	NEMA 3R lockable	
Enclosure	NEMA 3R	
Inverter Dimensions l x w x h	18.5" x 16.5" x 8.8"	
Weight	26 lbs	
<b>Documentation</b>		
Electrical Schematics	Included	
Install/Operation Manual	Included	
<b>Warranty Information</b>		
Green Power System Equipment	5 years	
Evergreen Power Output	25 years	



**Evergreen Modules**

Evergreen Solar Panels have one of the highest Performance Test Condition ratings per watt (W PTC) for higher rebates. Performance Test Condition testing simulates the real world high temperature conditions to which modules are subjected.



**We provide all the necessary documentation for inspection**

- Full engineering services and support
- AutoCAD drawings including wiring diagrams (3 line/1 line)
- Operations manual

